

MY-380F DRY INK CODING MACHINE

FEATURES

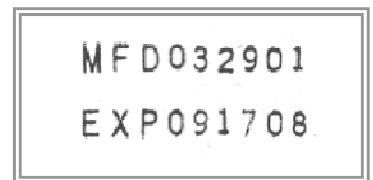
- Easy to operate
- Adjustable feeder try to accommodate different sizes
- Fast dry ink roller allows for clear, smudge resistant long lasting printing
- High throughput of 300pcs/minute

MY-380F is a dry-ink coding machine ideal for printing labels or pouches. The imprinter can print on paper, non-porous plastic film, and aluminum foil. MY-380F uses a cantilever type mechanism which is light and precise. The horizontal printing position is controlled by an electronic device that can easily be adjusted as needed. The object to be imprinted is selected by the machine's sensor. The machine also has a unique stepping clutch and produces very little noise. MY-380F is also equipped with a working tray (not shown) to collect imprinted items.

MY-380F is equipped with a fast dry-ink roller printing clear characters that are smudge resistant. Color choices include black, red, yellow, and blue. Typesets are easily changeable. Imprinter is equipped with a printing roller that can be used for both T and R arrange of types. Typeset included is T-typesets. R-typesets must be purchased separately. For typesets in T arrange, machine can print 1-10 lines with 1-10 characters per line. For types in R arrange, machine can print 1-8 lines with 1-8 characters in each line.

Sample of typeset printed on a
 5" x 5" plastic bag.
 (actual size)

Typeset includes:
 12 pieces of #0, 1
 10 pieces of #2
 6 pieces of #3-9
 2 pieces of M, F, D
 2 pieces of E, X, P



Wider printing platform (12" x17") also available.

Update 11/01/11.

Do not reproduce without permission.

MACHINE SPECS		PRINTING SPECS	
Power Supply	110V	Printing Lines T-Type (included)	10 lines 10 types/ line
Watts	180W	Printing Lines R-Type	8 lines 8 types/ line
Speed	300pcs/min	Print Position	24" W x 10" L
Dimensions (L x W x H)	18" x 14" x 10"	Type Size	10.5PT, 18PT
Weight	51lbs		