

■ DY-8B IMPRINTER

installation INSTRUCTIONS

****Always unplug the unit before adjusting as unit may be HOT**

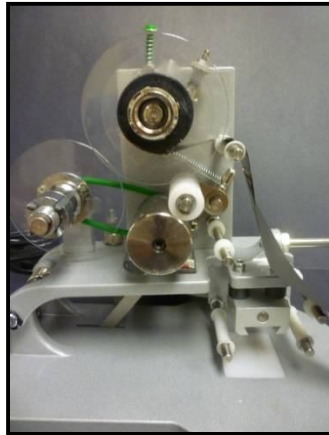
Note:

To use the imprinter, we suggest holding the imprinter down for a couple of seconds to allow the typeset to imprint properly on your packaging material.

installing the ink ribbon

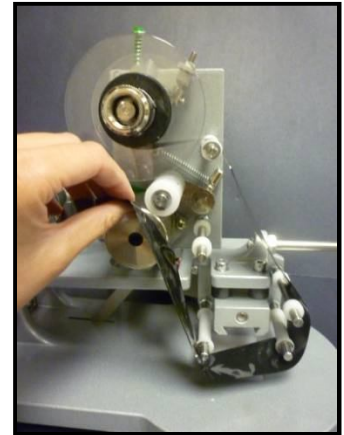
Step 1

Load the ribbon on the Ribbon Feed Wheel making sure the shiny side faces down and the matte side faces up.



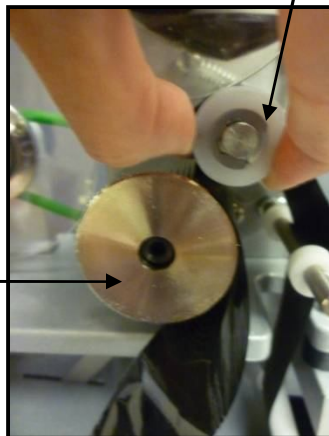
Step 2

Install the ribbon through the different guide rollers as shown in the diagram on the right.



Step 3.

Lift the pinch roller up and guide the ribbon between the pinch roller and stepping wheel.

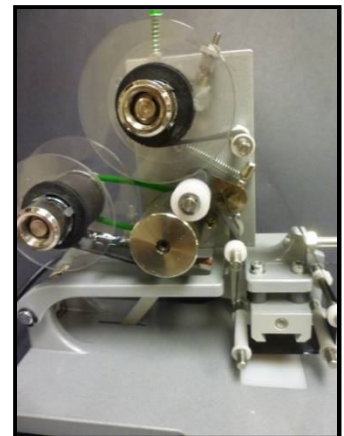


Pinch Roller

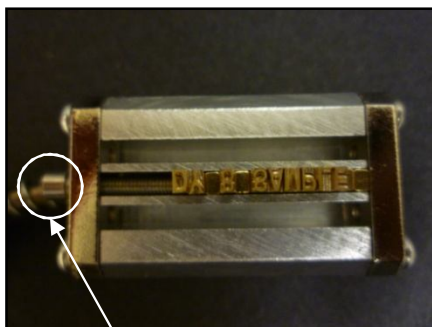
Stepping Wheel

Step 4

Pull the ribbon through the Ribbon Collect Roller. To pull additional ribbon through, turn the Ribbon Collect Roller clockwise.



installing the typesets



Stopper

Install typesets as shown in figure on the left. Characters should be inserted upside down and reading from left to right. Use the stoppers to hold the typesets in place.

Print example is shown on the right.

